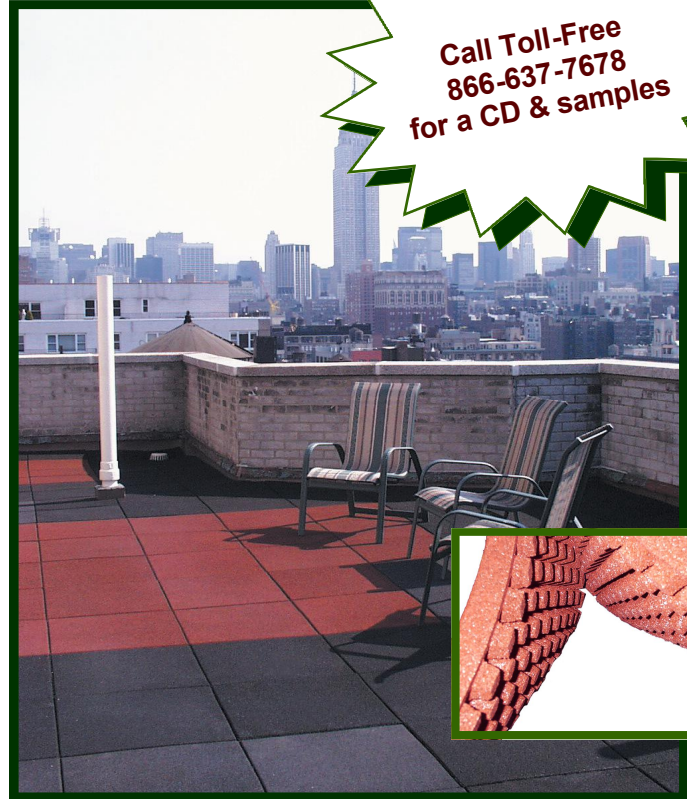


Introducing...

NO FAULT Safety Tile

- Ideal for residential or small commercial playgrounds
- Indoor or outdoor applications
- Shipped to your site at your convenience according to your schedule
- ASTM & ADA approved
- Unique No fault 4-Corner Lock is designed for roof-top applications
- Installed with full glue down or 4-Corner Lock System



Call Toll-Free
866-637-7678
for a CD & samples

Playground Application Meet ASTM F1292

Depth	Fall Height
2.25+	6q
3.75+	8q



Company Information:

No Fault Sport Group
3112 Valley Creek Drive
Suite C
Baton Rouge LA 70808
Phone: 866-637-7678 (toll free)
Fax: 877-291-3821 (toll free)
Email: info@nofault.com

Available Colors:



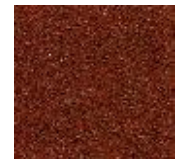
Black



Chrome



Green



Terra Cotta



3112 Valley Creek Drive
 Suite C
 Phone: (225) 215-7769
 Fax: (225) 291-3821
 www.nofault.com

**No Fault Safety Tile
 SPECIFICATION**

Physical Specification: No Fault Safety Tile configurations must consist of a high density water permeable surface, tapered conical support legs, surface expansion joint and perimeter adhesion bar (2 1/4" thickness) in order to maximize shock attenuation, walk ability, ease of installation, and water drainage.

Component Specification: No Fault Safety Tile is a factory molded surface composed of high quality rubber granules bound with a wear and weather resistant polyurethane. The polyurethane binder is composed of MDI (diphenylmethanediisocyanate) isocyanate and polyether (polypropyleneglycol) polyols. TDI (toluene diisocyanate) isocyanate or catalysts based on lead or mercury are not utilized. Rubber granules are blends of ground rubber particulate specially blended to enhance tile strength, durability, and energy absorption characteristics. All coloring pigments are inorganic oxides. Pigments based on cadmium are not utilized.

	<u>2 1/4" Thickness</u>	<u>3 3/4" Thickness</u>
Dimensions (78° F.):	24"x24" ± 1/8"	24"x24" ± 1/8"
Wear Surface Density:	50.0 lbs./cu.ft., min.	48.0 lbs./cu.ft., min.
Coefficient of Thermal Expansion:	1.10x10 ⁻³ in./ft./°F.	1.10x10 ⁻³ in./ft./°F.
Void Volume:	42% min.	50% min.
Perimeter Adhesion Bar:	Provides capability for N/A full length edge adhesion. Bar dimensions: 1 1/4"x 24"+on all 4 sides	
Weight:	5.43 lbs./sq. ft.	7.58 lbs./sq. ft.

<u>CPSC and ASTM F-1292-99 Critical Height</u>	<u>6'</u>	<u>8'</u>
30°F.	Less than 200 G-max and 1000 HIC.	Less than 200 G-max and 1000 HIC.
72°F.	Less than 200 G-max and 1000 HIC.	Less than 200 G-max and 1000 HIC.
120°F.	Less than 200 G-max and 1000 HIC.	Less than 200 G-max and 1000 HIC.

Plant Control Testing

<u>Property</u>	<u>Test Method</u>	<u>Typical Result</u>
Tensile Strength	DIN 18035 Part 6	1.43 N/mm ²
Elongation at Break	DIN 18035 Part 6	118%

Characteristic Testing

<u>Property</u>	<u>Test Method</u>	<u>Typical Result</u>
Tear Resistance	ASTM D-624, Die C	13.13kN/m
Abrasion Testing	ASTM D-3389, Taber Abrasion, Method B,	0.20 mg/revolution 2000 cycles, H-22 wheel.
Coefficient of Friction	DIN 18035 Part 6	

		<u>New</u>	<u>Aged 42 Days</u>	<u>Lightly Sanded</u>
	Dry	0.15	0.54	0.55
	Wet	0.23	0.76	0.53
Permeability to Water	DIN 18035 Part 6	0.045 cm/sec		
Accelerated Aging	Xenon Arc, 2000 hrs. DIN 18035 Part 6	105% Tensile Retention 87% Elongation Retention		
Flammability	ASTM D-2859-96 (Burning Pill Test)	8 of 8 Samples Passed		
Fungal Resistance	ASTM G21-96	<u>After 28 Days</u>	<u>After 60 Days</u>	